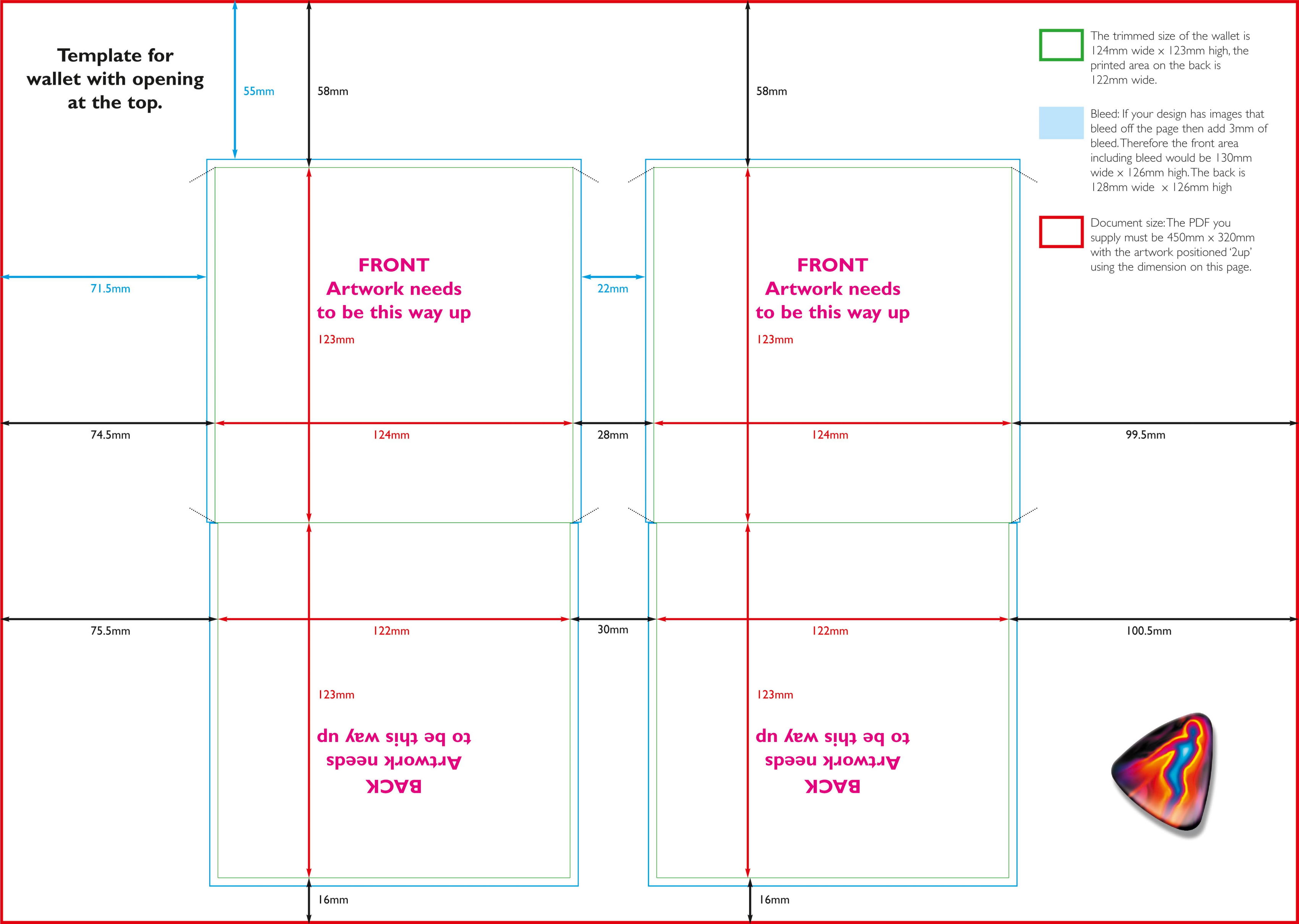

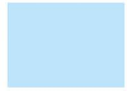



**Template for wallet with opening at the top.**



 The trimmed size of the wallet is 124mm wide x 123mm high, the printed area on the back is 122mm wide.

 Bleed: If your design has images that bleed off the page then add 3mm of bleed. Therefore the front area including bleed would be 130mm wide x 126mm high. The back is 128mm wide x 126mm high

 Document size: The PDF you supply must be 450mm x 320mm with the artwork positioned '2up' using the dimension on this page.

